

STAAR CONNECTION™

Diagnostic Series™

Science

5

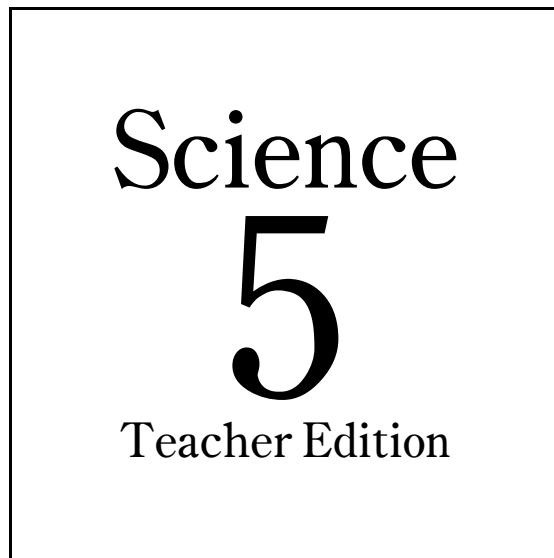
teacher



KAMICO®

Instructional Media, Inc.

STAAR CONNECTION™



Diagnostic Series™



KAMICO®
Instructional Media, Inc.

© KAMICO® Instructional Media, Inc.
P.O. Box 1143
Salado, Texas 76571
Telephone: 254.947.7283 Fax: 254.947.7284
E-mail: info@kamico.com Website: www.kamico.com

KAMICO® Instructional Media, Inc.
STAAR CONNECTION™
Diagnostic Series™
Grade 5 Science
Table of Contents

Reporting Categories and Related TEKS	7
Assessment 1	15
Assessment 2	22
Assessment 3	29
Assessment 4	35
Assessment 5	43
Assessment 6	50
Assessment 7	58
Assessment 8	65
Assessment 9	71
Assessment 10	78
Assessment 11	85
Assessment 12	91
Assessment 13	97
Assessment 14	104
Assessment 15	109
Assessment 16	114
Assessment 17	120
Assessment 18	125
Assessment 19	130
Assessment 20	135
Answer Key	142
Student Bubble Answer Sheet	155
Bubble Answer Key	159
TEKS Alignment Chart	163
Student Progress Chart	174
Letter to Parents	175
Test-Taking Tips	176
Strategies for Reducing Your Students' Test Anxiety	177
Rulers	178
KAMICO® Product Information	179

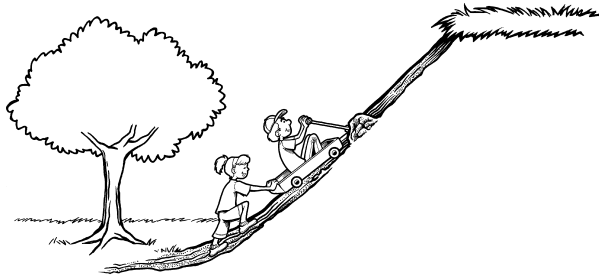
Name _____ Date _____

- 1 Tia is going to separate some recycled materials using a magnet. The materials she is separating out are —
 - A plastic bottles.
 - B aluminum cans.
 - C iron nails.
 - D glass jars.

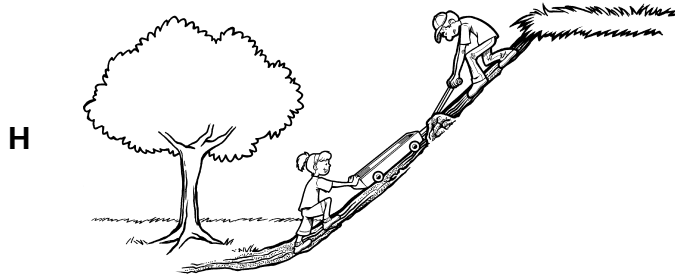
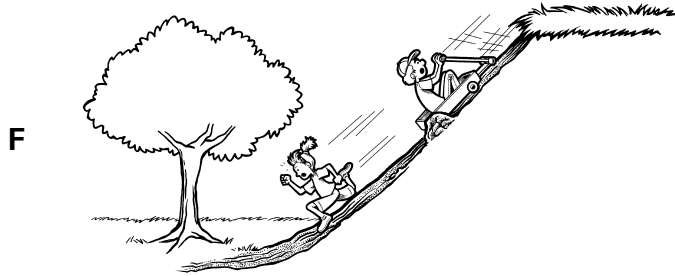
- 2 Celeste puts a stick of butter in a bowl and puts it into a microwave oven. She heats the butter on high for 30 seconds. Which statement correctly describes the butter's change in state?
 - F The butter changes from a liquid to a gas.
 - G The butter changes from a gas to a liquid.
 - H The butter changes from a solid to a liquid.
 - J The butter changes from a solid to a gas.

- 3 The blades of tall windmills can be seen turning on some high ridges in west Texas. The giant blades turn generators that convert —
 - A wind energy into solar energy.
 - B electrical energy into wind energy.
 - C solar energy into wind energy.
 - D wind energy into electrical energy.

4 Aida is pushing her brother in a wagon up a hill.



Which drawing shows Aida's push force doing the most work on the wagon?



- 5** Coal and oil are fossil fuels that were formed hundreds of millions of years ago. What were the three main factors needed to turn the remains of dead organisms into fossil fuels?
- A** unlimited oxygen, water, and bacteria
 - B** absence of oxygen, natural gas, and heat
 - C** salt water, pressure, and bacteria
 - D** absence of oxygen, pressure, and heat
- 6** The sun and wind lift tiny particles of moisture from the ocean. This water vapor mixes with air. When the air cools, the vapor forms clouds. Clouds shed rain. This formation of clouds and rain is an example of —
- F** condensation.
 - G** runoff.
 - H** evaporation.
 - J** absorption.

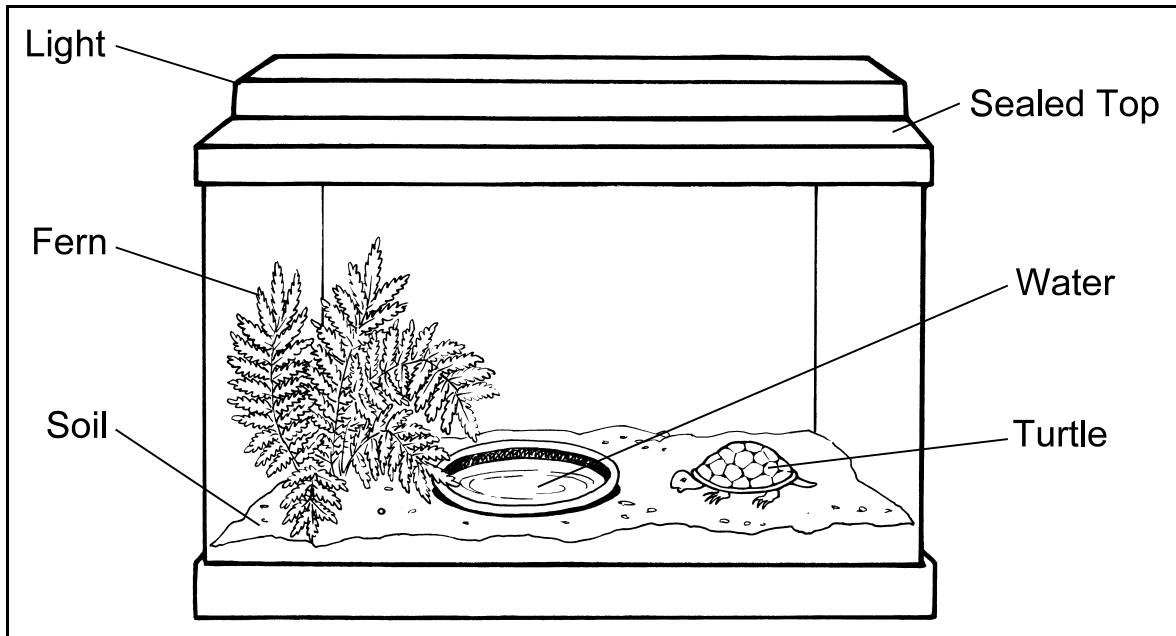
- 7 Jeremy is collecting weather information. He sets a thermometer and a shallow pan outside of his house one evening. The next day, he observes the weather in the morning and in the evening. He records his findings in a table.

Weather Data Table for March 8th					
Time of Observation	Cloud Cover	Temperature (degrees F)	Wind Conditions	Wind Direction	Precipitation (in inches)
Mid-Morning	cloudy	78	calm	no wind	0
Late Afternoon	clear	58	breezy	from north	1.8

Which two measurements most likely suggest that a cold front moved in?

- A cloud cover and wind direction
- B wind conditions and precipitation
- C temperature and wind conditions
- D precipitation and cloud cover

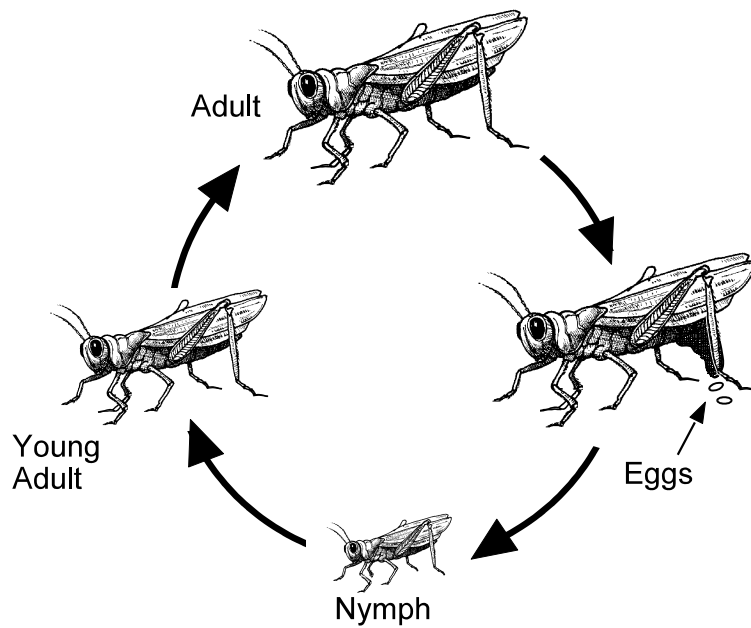
8 Examine the drawing.



The turtle and the fern live in a sealed terrarium. How do they interact with one another to obtain and supply a basic resource? The turtle depends on the fern to —

- F supply carbon dioxide, and the fern depends on the turtle to provide food.
 - G supply oxygen, and the fern depends on the turtle to provide carbon dioxide.
 - H supply water, and the fern depends on the turtle to provide oxygen.
 - J supply food, and the fern depends on the turtle to provide oxygen.
- 9 Swans, frogs, turtles, and beavers are animals that live in or around ponds and rivers. What structure do these animals have in common, and what is the function of the structure?
- A These animals have strong legs that they use to kick predators.
 - B These animals have sharp teeth to chew hard bark and tough plant stems.
 - C These animals have webbed feet to help them swim through water.
 - D These animals have thick layers of fat to protect them from cold.

10 Examine the life cycle of the grasshopper.



Based on your knowledge of animal life cycles, the life cycle of a grasshopper is most similar to the life cycle of a —

- F frog.
- G butterfly.
- H snake.
- J dog.

11 Adele accidentally burned herself by touching hot glassware in the classroom. The first thing Adele should do is —

- A** put a bandage on the burn.
- B** tell her teacher what happened.
- C** run to the phone and call her parent.
- D** pour rubbing alcohol on the burn.

12 Andy wants to study the growth of sunflowers for a science fair project. She knows she needs to have a well-defined question that can be tested reliably.

Which question would be best for Andy to ask?

- F** Will sunflowers grow faster when they receive more sunlight than water?
- G** Will sunflowers grow faster when they are given more fertilizer?
- H** Will sunflowers grow faster when they are given more fertilizer and air?
- J** Will sunflowers grow faster in a field or on a mountain top?

STAAR CONNECTION™
Diagnostic Series™ Grade 5 Science
TEKS Alignment Chart

NOTE:

TEA advises that the Scientific Investigation and Reasoning Skills "will be incorporated into at least 40% of the test questions in reporting categories 1-4 and will be identified along with content standards." KAMICO® has followed these guidelines. However, to ensure thorough coverage of the Scientific Investigation and Reasoning Skills, KAMICO® writers have included extra questions over just those skills to ensure student mastery.

For each grade or course, TEA has identified some of the TEKS eligible to be assessed on STAAR as readiness standards. These readiness standards will be emphasized on the STAAR assessments. The remaining TEKS eligible to be assessed on STAAR are considered supporting standards. Although supporting standards will be assessed, they will not be emphasized on STAAR. KAMICO® has shown whether each question assessed in this book is aligned to a readiness standard or a supporting standard.

Readiness standards

- are essential for success in the current grade or course,
- are important for preparedness for the next grade or course,
- support college and career readiness,
- necessitate in-depth instruction, and
- address broad and deep ideas.

Supporting standards, although introduced in the current grade or course,

- may be emphasized in a subsequent year,
- may be emphasized in a previous year,
- play a role in preparing students for the next grade or course but not a central role, and
- address more narrowly defined ideas.

Assessment 1

Question Number	Answer	Reporting Category	TEKS	Readiness or Supporting Standard	SIRS
1	C	1	5.5A 5.5C	Readiness Supporting	5.2D
2	H	1	3.5C	Supporting	5.2D
3	D	2	5.6A	Readiness	5.2D
4	J	2	3.6B	Supporting	5.3A
5	D	3	5.7A	Readiness	
6	F	3	5.8B	Supporting	5.2D
7	C	3	4.8A	Supporting	5.2C 5.2D
8	G	4	5.9A 5.9D	Readiness Supporting	5.2D
9	C	4	5.10A	Readiness	5.2D
10	H	4	3.10C	Supporting	
11	B	SIRS	5.1A		5.1A
12	G	SIRS	5.2B		5.2B