

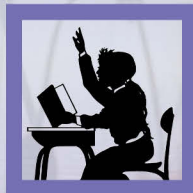
CONNECTION® TO LITERATURE

part of the CONNECTION® series

Charlotte's Web

a study guide to support integrated learning,
academic performance, and positive behavior

math, reading, writing, social studies, science,
fine arts, and technology



KAMICO®

INSTRUCTIONAL MEDIA

Name _____

Date _____

**Charlotte's Web
Chapters 7 through 10
Spelling List**

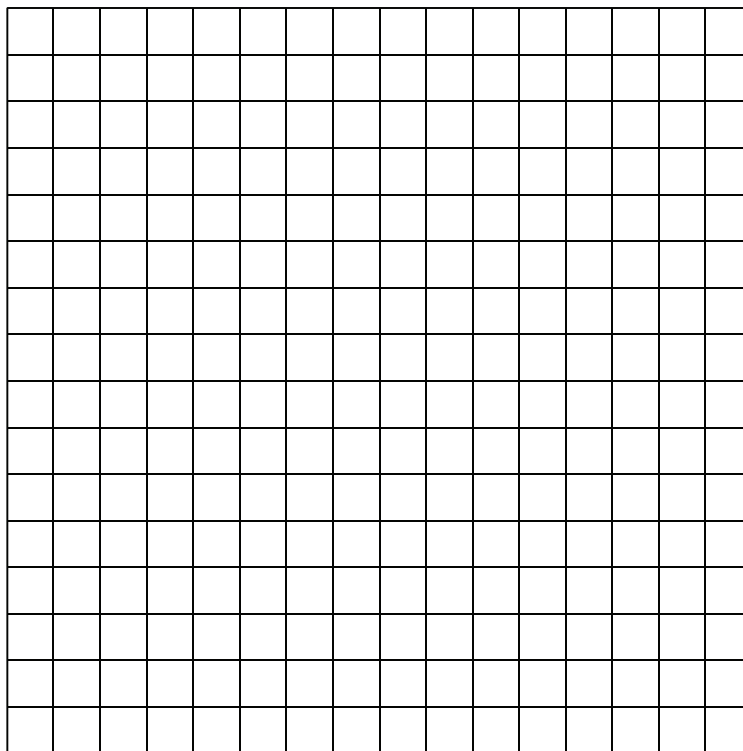
Think of words with doubled consonants—for example, *tattered*, *bubble*, and *tomorrow*.

Say each of the following words. Then, spell the word out loud. On a separate piece of paper, write the word two times.

worry	narrow	commanded	succeeded	supporting
bottom	middle	summer	followed	collected

Spelling Activity

Make your own spelling crossword puzzle. Use the grid below to construct your own crossword puzzle with your spelling words. Blacken any spaces not used by letters, and write your clues on the back.

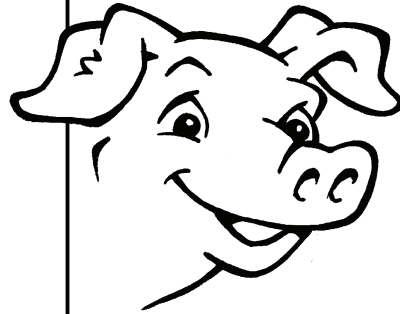


Name _____

Date _____

**Charlotte's Web
Chapters 7 through 10
Vocabulary**

rigid	descended
vaguely	hysterics
surly	



Complete A and B before you begin reading chapters 7 through 10.

- A. Write down what you think each word means.
- B. Look up each word in the dictionary. Read the meaning carefully. Then, write, in your own words, what you think the word means. Do not just copy the definition out of the dictionary.

Complete C and D after you have finished chapters 7 through 10.

- C. Use each vocabulary word in a sentence.
- D. Illustrate your sentences.

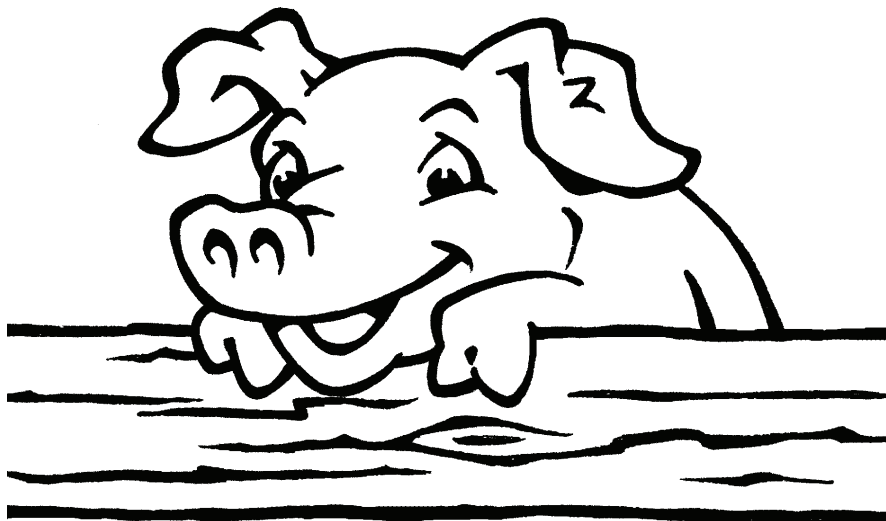
Name _____

Date _____

**Charlotte's Web
Chapters 7 and 8
Reading Comprehension**

Mark the correct answer.

1. How is the setting of chapter 7 different from the setting of chapter 8?
- A Chapter 7 takes place during Christmastime, but chapter 8 takes place in the summer.
 - B Chapter 7 takes place on a Sunday morning, but chapter 8 takes place on an afternoon.
 - C Chapter 7 takes place in the Zuckermans' orchard, but chapter 8 takes place in Avery's room.
 - D Chapter 7 takes place in the Zuckermans' barn, but chapter 8 takes place in the Arables' kitchen.



2. Read the first sentence of the summary below.

Summary of Chapter 7
<u>As time went by, Wilbur and Charlotte became better friends,</u> <u>and Wilbur grew fatter.</u>

Which of the following completes the summary above?

- A Wilbur started crying and moaning. Charlotte promised to keep anything from happening to him and then told him to quiet down. She said that she did not know how she would protect him.
- B From time to time, Wilbur talked to some other animals in the barn. A girl came to watch him. Once, an animal said something that upset Wilbur, but another creature said something to try to calm him.
- C One day, the oldest sheep told Wilbur that the Zuckermans were fattening him because they wanted to kill him and turn him into bacon and sausage. Wilbur became very upset, but Charlotte promised to save him.
- D The old sheep who lived on the farm had been around for a long time. He knew what the Zuckermans planned to do with Wilbur because he had seen what had happened to other spring pigs on the farm. He told Wilbur about the Zuckermans' plan.

3. As Christmas gets closer, Mr. Zuckerman will probably —
- A feed Wilbur more.
 - B put Wilbur on a diet.
 - C try to sell Wilbur.
 - D give Wilbur back to Fern.
4. In chapter 7, Charlotte says, "You're carrying on in a childish way. Stop your crying!"

What does childish mean?

- A without any sons or daughters
 - B like a little kid
 - C like something round
 - D like an old person
5. From what Mrs. Arable says to her husband about Fern, the reader can tell that she probably believes that —
- A the animals talk to Fern.
 - B Fern has a healthy imagination.
 - C there might be something wrong with Fern.
 - D her ears are not as sharp as Fern's.

Name _____

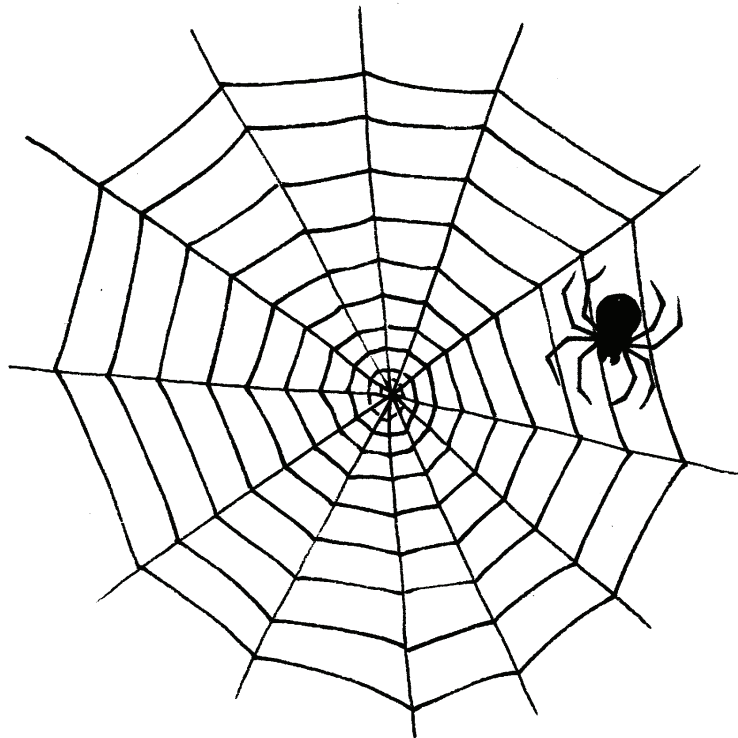
Date _____

Charlotte's Web
Chapter 9
Reading Comprehension

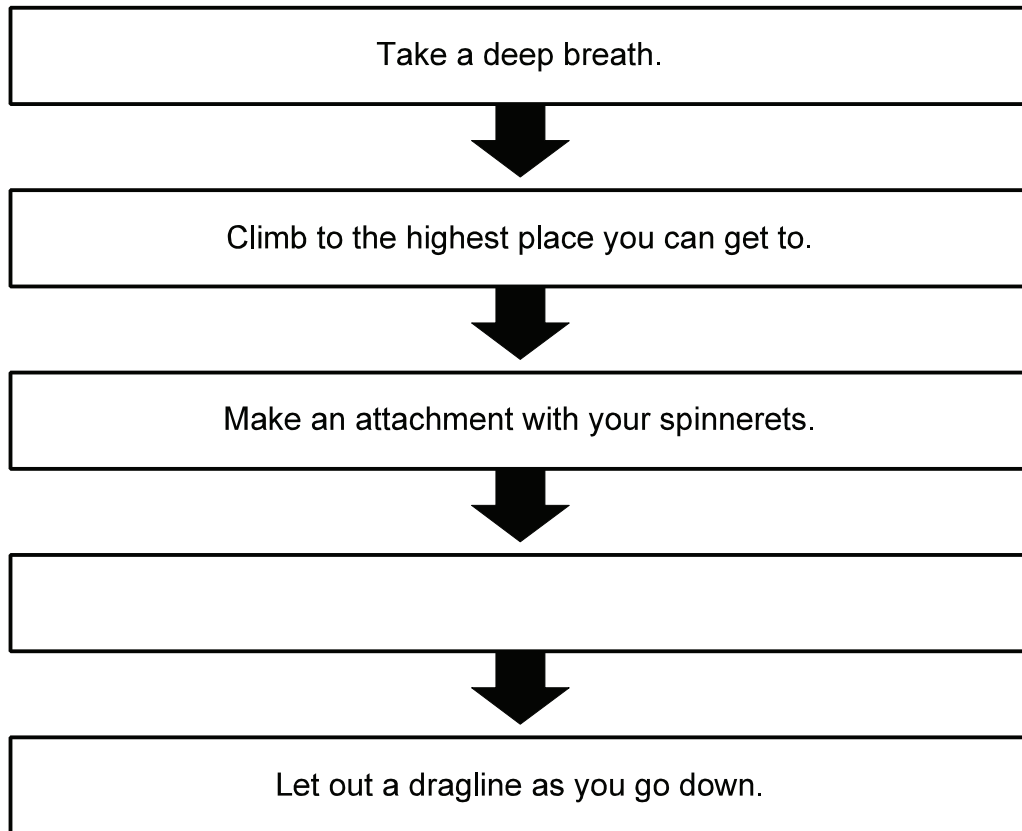
Mark the correct answer.

1. Why was this chapter written?

- A to entertain readers with a story about how Wilbur and Charlotte's relationship grows
- B to convince readers that all spiders are much smarter than pigs
- C to explain to readers what the Queensborough Bridge looks like
- D to express the author's feelings about life on a farm



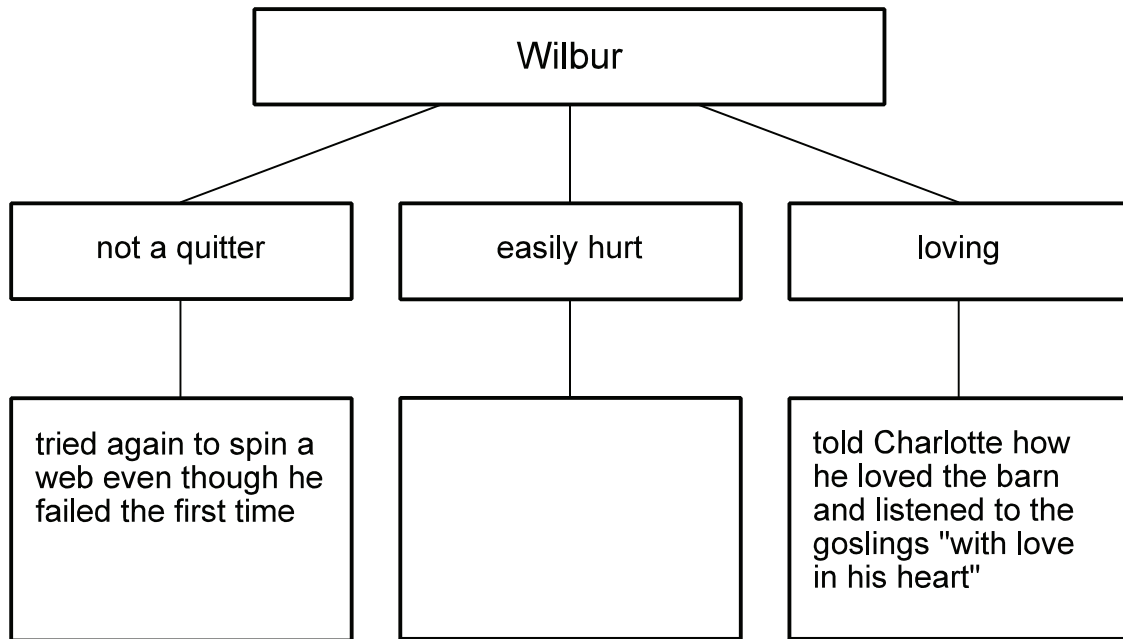
2. Look at the diagram. It shows Charlotte's instructions to Wilbur for how to spin a web.



Which of the following belongs in the blank space?

- A Borrow a piece of string from Templeton.
- B Hurl yourself into space.
- C Tie the piece of string to the end of your tail.
- D Land on the ground with a thud.

3. Look at the diagram. It shows some of Wilbur's traits revealed in chapter 9 and the things he does to show those traits.



Which of the following belongs in the blank space?

- A went back to his trough to eat the last little piece of mashed potato he had left there
 - B heard the trill of the tree toad and the slamming of the Zuckermans' kitchen door
 - C asked Templeton to tie the piece of string to the end of his tail
 - D cried when the lamb told him he smelled worse than any other animal in the barn
4. Charlotte told Wilbur he could help her by —
- A gaining weight.
 - B giving most of his food to Templeton.
 - C watching for Lurvy.
 - D bringing her a little bit of his food.

5. Chapter 9 says, "Wilbur sat bolt upright." What does it mean to sit "bolt upright"?
- A to sit lazily and slowly
 - B to sit and then run quickly
 - C to sit and spin around
 - D to sit stiffly and straight

Name _____

Date _____

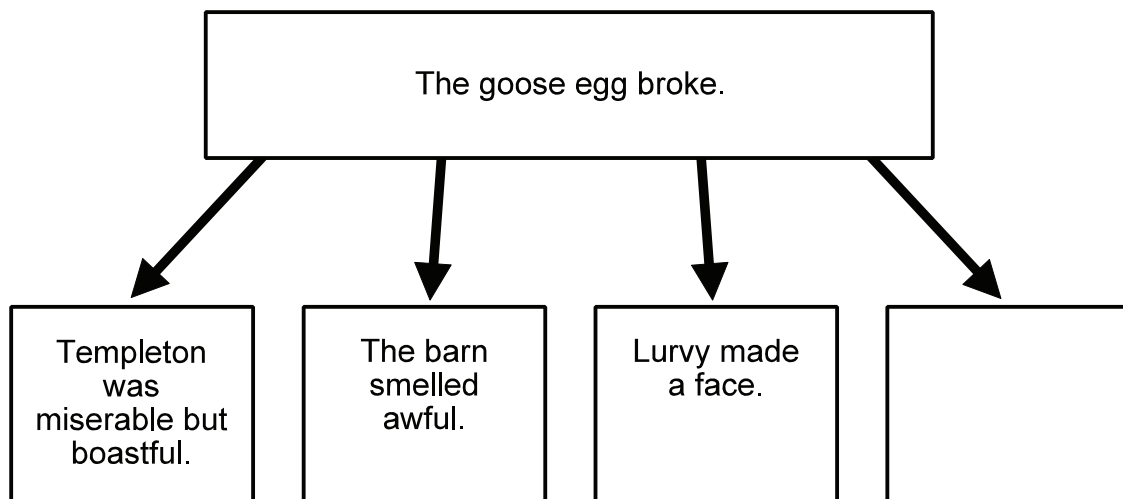
Charlotte's Web
Chapter 10
Reading Comprehension

Mark the correct answer.

1. One problem in chapter 10 is that Avery tries to capture Charlotte. How is this problem solved?
 - A Fern told Avery to be satisfied with the frog that he already had, and the boy agreed.
 - B The children decided to spend their time playing on their uncle's rope swing instead.
 - C Lurvy kicked some dirt into Templeton's nest, covering up his possessions and Charlotte, too.
 - D Avery fell, breaking the goose egg and releasing a horrible smell that drove him from the barn.

2. Chapter 10 reads, "Fern had a crown of daisies in her hair." What does crown mean in this sentence?
 - A the top part of something
 - B something worn on the head
 - C a part of a tooth
 - D a coin showing a king or queen

3. Why did Wilbur decide to leave Templeton a whole noodle instead of half a noodle?
- A Wilbur wanted to thank him for saving the goose egg.
 - B Wilbur hoped to persuade him to work with Charlotte to save his life.
 - C Wilbur thought that he looked too thin and worried he was not eating well.
 - D Wilbur felt sorry for him since Lurvy kicked dirt into his nest.
4. Look at the diagram. It shows a cause and its effects from the chapter.



What belongs in the empty space?

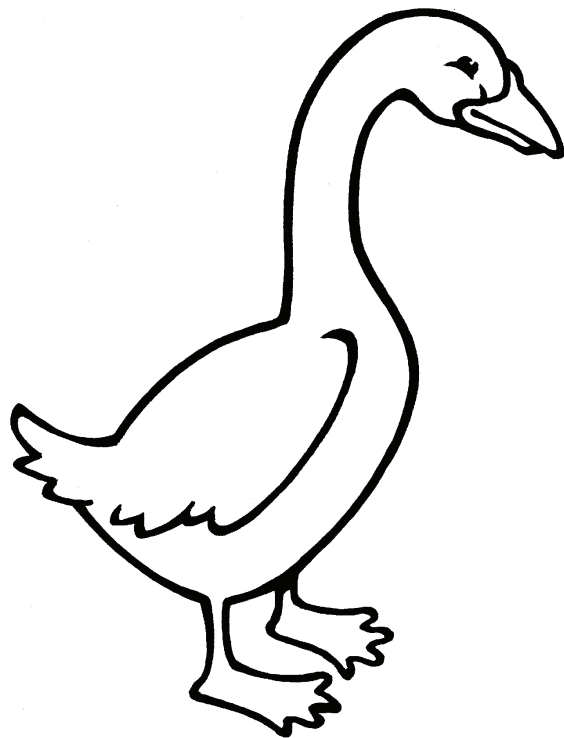
- A Avery lost his balance.
- B The goose was proud and delighted.
- C Charlotte tore a section out of her web.
- D Charlotte ate a horsefly.

5. This sentence is from chapter 10:

"Fern bit into a raspberry that had a bad-tasting bug inside it, and got discouraged."

What does discouraged mean?

- A felt like eating
- B wanted to learn more about something
- C became happy and excited
- D lost interest or enjoyment in something



Name _____

Date _____

Charlotte's Web
Chapters 7 through 10
Composition (Expressive/Narrative)

In chapter 9, Wilbur tries for the first time to spin a web. Sometimes when we try to do something for the first time, we feel as unsuccessful as Wilbur. Other times we might be very successful the first time we try to do something. Write a story about when you tried to do something for the first time.

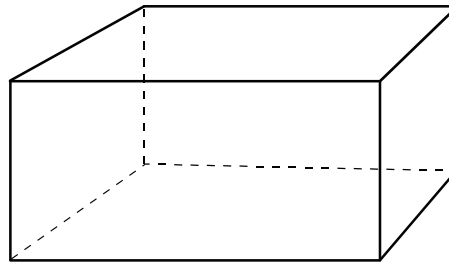
Name _____

Date _____

Charlotte's Web
Chapters 7 through 10
Mathematics

Mark the correct answer.

1. Below is a picture of Lurvy's toolbox. Its sides are all regular polygons. How many faces does the toolbox have?



Record your answer, and fill in the bubbles. Be sure to use the correct place value.

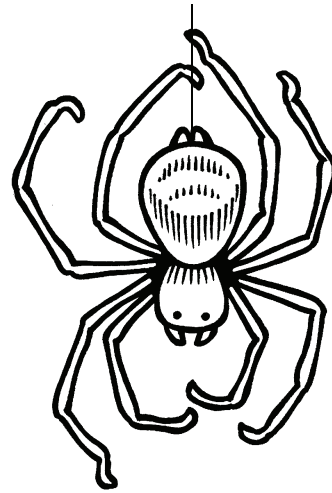
			.
0	0	0	
1	1	1	
2	2	2	
3	3	3	
4	4	4	
5	5	5	
6	6	6	
7	7	7	
8	8	8	
9	9	9	

2. Wilbur weighs more than the goose. Fern weighs more than the lamb. The lamb weighs less than the goose. Which of the following is a reasonable conclusion?

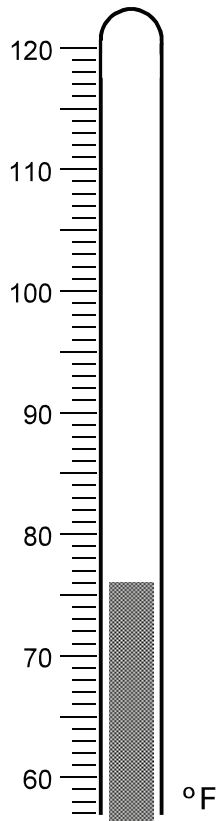
- A The lamb weighs less than Wilbur.
- B Wilbur weighs the most.
- C Fern weighs the most.
- D Wilbur weighs more than Fern.

3. If a single spider has 8 legs, about how many legs would 400 spiders have?

- A 800 legs
- B 1,600 legs
- C 3,200 legs
- D 32,000 legs



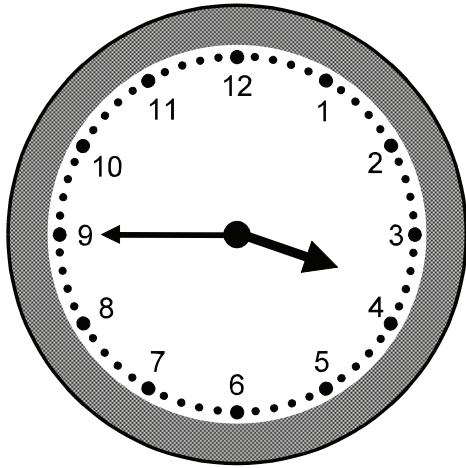
4. The thermometer shows the temperature in the barnyard.



What is the temperature in the barnyard?

- A 75°F
- B 76°F
- C 78°F
- D 80°F

5. Fern goes to the barn to visit Wilbur almost every day at the time shown on the clock.



She leaves as soon as school is out and walks directly to the barn. If it takes Fern 20 minutes to get to the barn, at what time does school get out?

- A 4:05
- B 3:25
- C 2:55
- D 2:20

Name _____

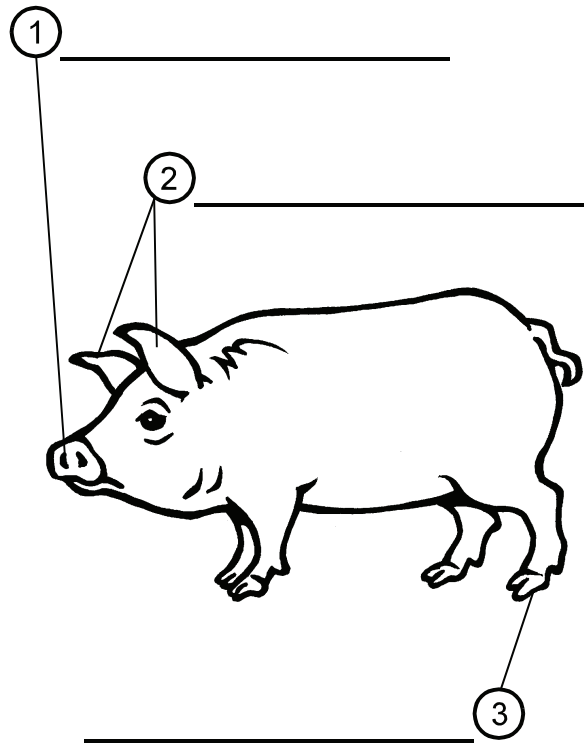
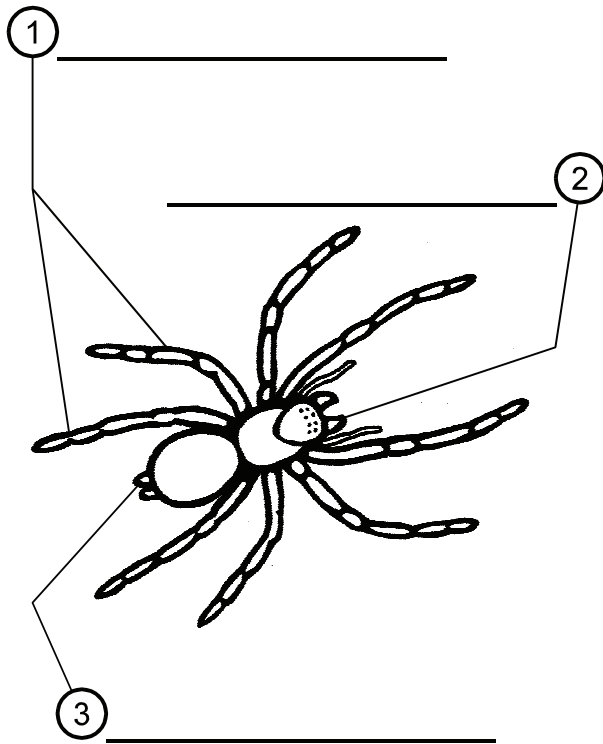
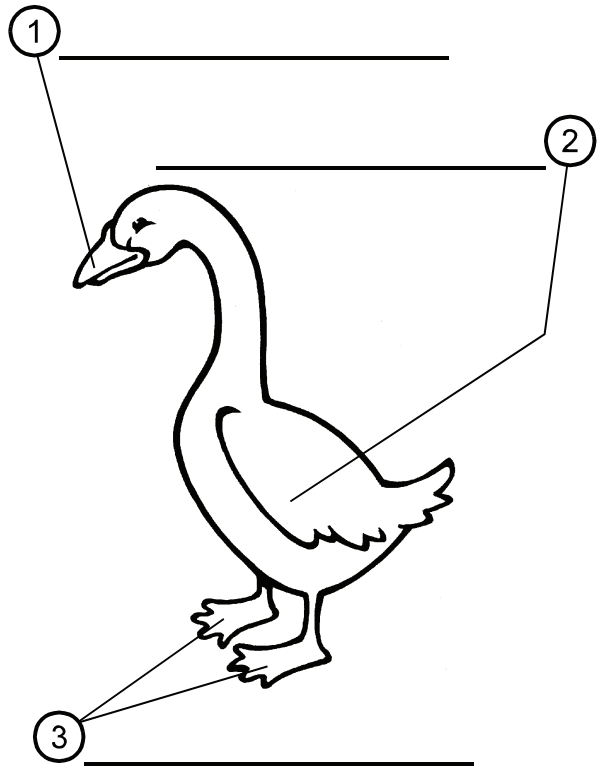
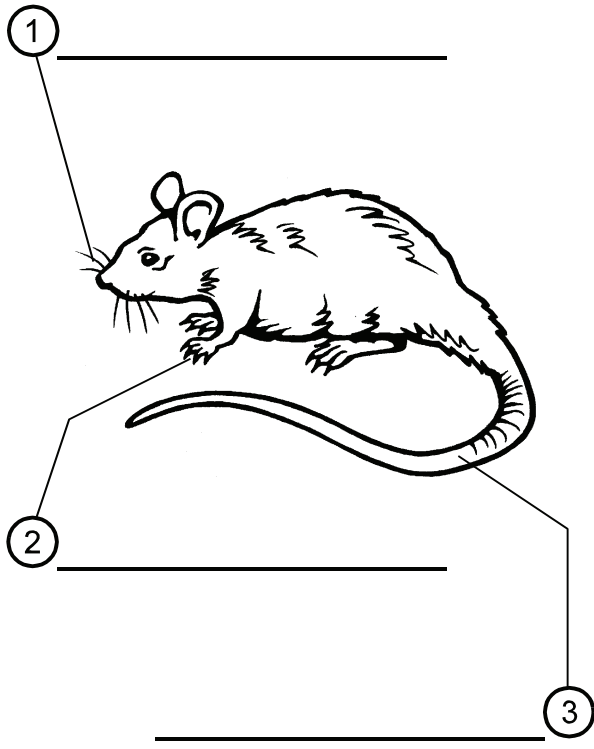
Date _____

Charlotte's Web
Chapters 7 through 10
Science

Identify the functions of animal structures. "Oomp!" grunts Wilbur as he falls to the ground when he tries to spin a web. Wilbur quickly learns that pigs do not have the same structures as spiders for spinning webs. Wilbur should appreciate his pig structures, such as hooves that support his weight while walking on different types of ground surfaces. Pigs and spiders belong to different *species* of animals. A species is a group of organisms that are capable of reproducing with one another. Different species have different structures with functions that help them survive in their environment. Compare the structures of different species, and determine their functions.

1. Study the drawings of a spider, a pig, a goose, and a rat shown on the following page.
2. Identify the structures that are circled and numbered. Label each structure, and write a description of each structure's function in the table titled "Functions of Animal Structures."
3. Answer the evaluation questions.

Structures of Different Species



Functions of Animal Structures

Animal	Structure	Structure's Function
Rat	①	
	②	
	③	
Goose	①	
	②	
	③	
Spider	①	
	②	
	③	
Pig	①	
	②	
	③	

Evaluation Questions

1. Which animal has a structure that allows it to live on both land and water?

2. Why would a pig be more suited than a goose to find food in a heavily wooded area?

3. Which animals have structures that help them to escape predators by climbing?

4. Which animals have structures that help them move around in the dark?

Name _____

Date _____

Charlotte's Web
Chapters 7 through 10
Social Studies

Every year around Christmastime, the Zuckermans had a tradition of slaughtering a pig to eat. Other families also have holiday traditions, such as cooking a goose or a turkey, making tamales, or baking pumpkin pies. There are many holidays that we celebrate, and each is celebrated in its own unique way.

Some holidays are special to people in Texas. These state holidays include Texas Independence Day, San Jacinto Day, Confederate Heroes Day, Emancipation Day in Texas (Juneteenth), and Lyndon Baines Johnson Day. As a class, divide into several groups, with each group selecting a different Texas state holiday. With your group, research the holiday, its origins, its significance, the way it was celebrated in the past, and the way it is celebrated today. Prepare a presentation for the class to share the information you learn. You may create posters showing graphic organizers such as time lines or Venn diagrams to relate your findings. You may display holiday items that you or your family members have. You may record an interview with a family member or neighbor and play the recording for the class. You may bring in a guest speaker to describe the holiday. You may create a diorama for presentation or perform a skit. Be creative with your ideas. Be sure to explain how the holiday began, how it is celebrated, and why it is important.

Name _____

Date _____

Charlotte's Web
Chapters 7 through 10
Technology

1. At your computer, open a web browser. Some web browsers are Internet Explorer, Firefox, Chrome, Safari, and Opera. Your teacher can show you how to open a web browser on your computer.
2. Open a search engine. Do this by typing the web address of the search engine in the white space of the address bar. Some search engine websites are www.google.com, www.yahoo.com, www.ask.com, and www.bing.com. Then, press the Enter key, or click on the Go button with the mouse. Your teacher can help you with this step.
3. You will see a long blank box on the web page. This is called a "search box." In the search box, type "map." Then type the name of the city and state where you live.
4. Press the Enter key, or click on the Search button with the mouse. (This button might be labeled with the words "Find" or "Web Search," with a magnifying glass, or with some other words or symbol, depending on the search engine you are using.)
5. Now, you will see a list of web pages. Click on one that shows a map of your city or town. Practice zooming in to show places in detail and zooming out to see areas outside your city or town. See if you can find the following places on the map. As you find each place, check it off the list.

the place where you live

a library near where you live

your favorite place to go

your school

a restaurant or grocery store near where you live